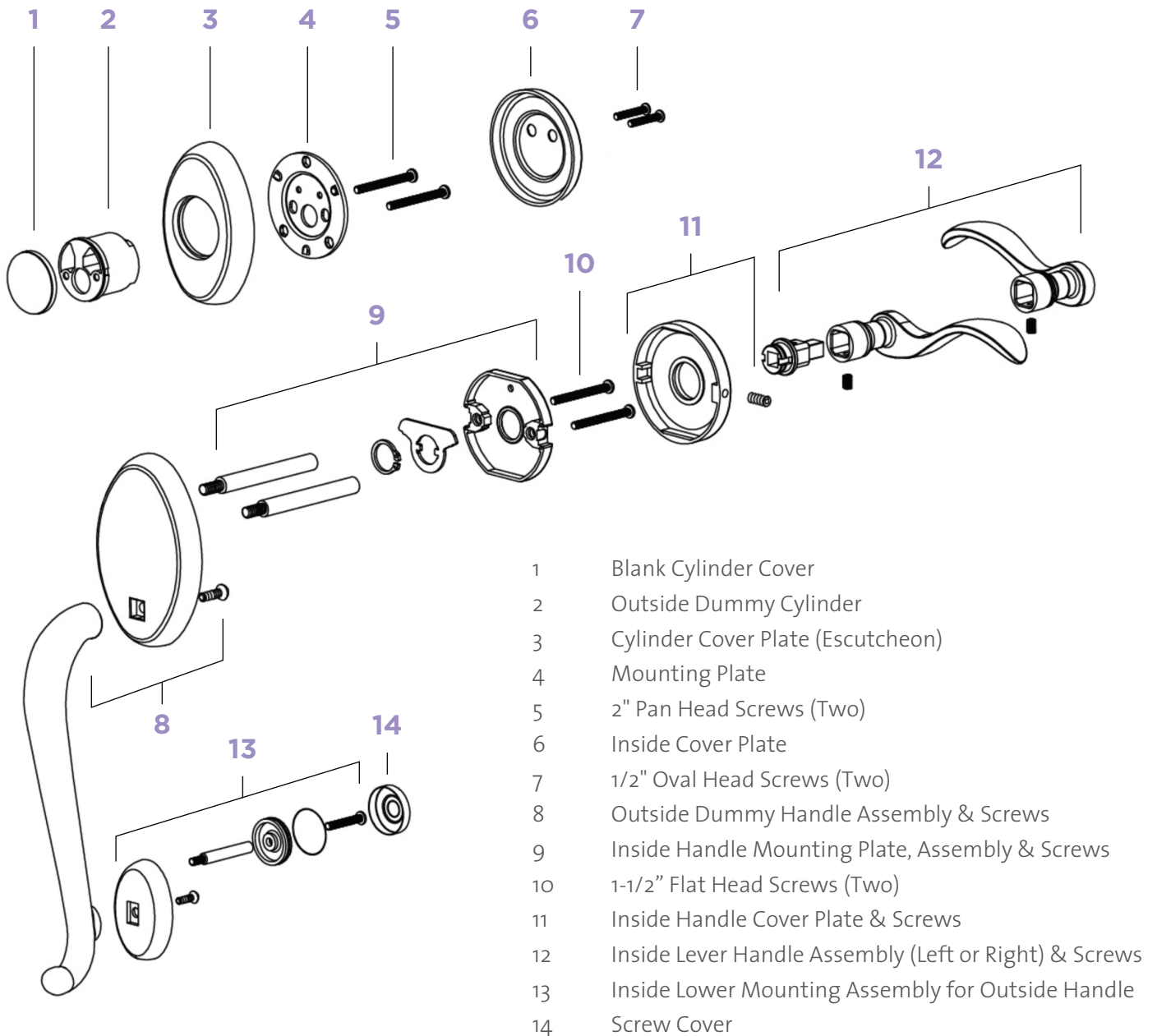


INSTRUCTIONS (Page 1 of 3)

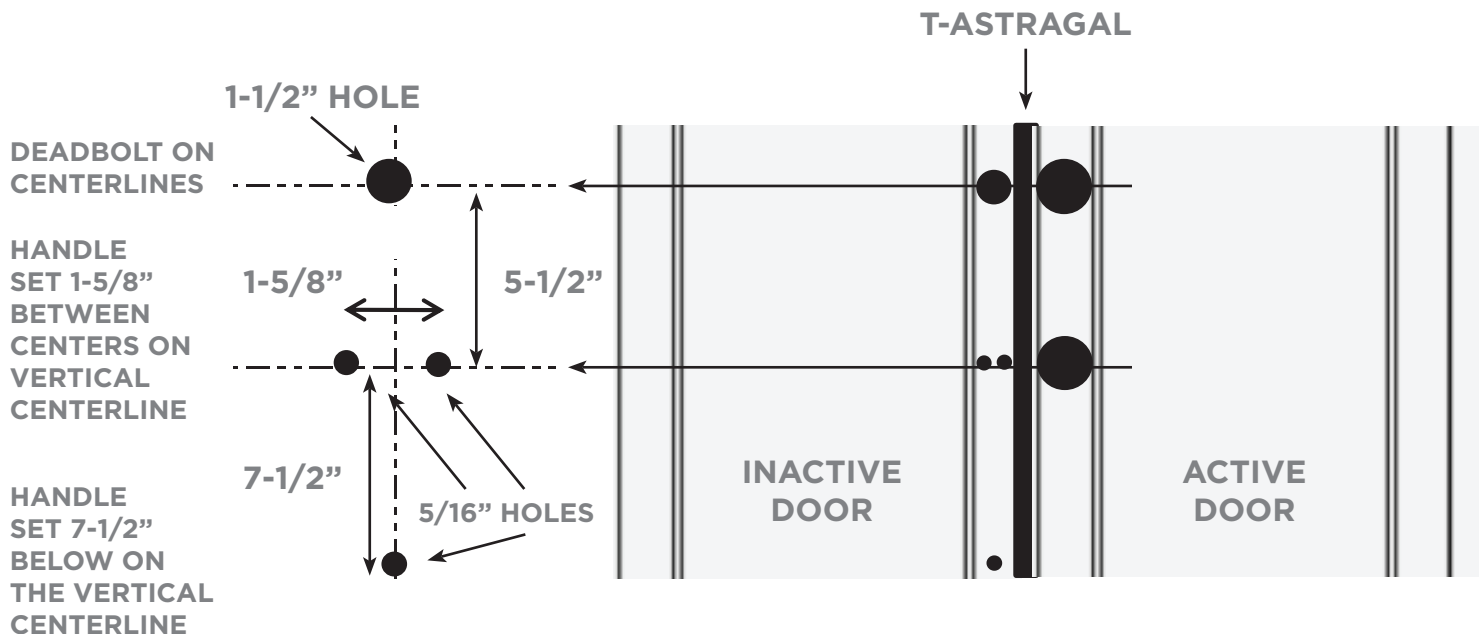
TM PATIO DUMMY LOCKSET INSTALLATION INSTRUCTIONS



INSTRUCTIONS (Page 2 of 3)

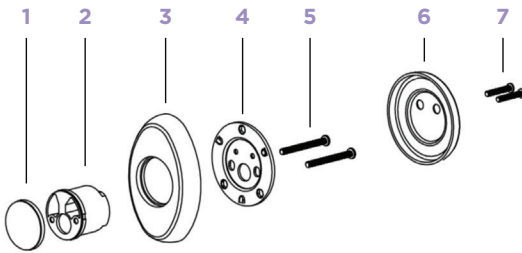
INACTIVE DOOR PREPARATION FOR DUMMY DEADBOLT AND HANDLE

- The dummy lockset is to be applied to the inactive door. The inactive door will need to be prepared for the installation by drilling ONE hole for dummy deadbolt 1-1/2" in diameter and THREE holes for dummy handle set 5/16" in diameter.
- To determine the vertical centerline on the inactive door, start at the edge of the T-astagal closest to the active door and add an additional 5/8" to the backset measurement. The centerlines will be 3" for the 2-3/8" or 3-3/8" for the 2-3/4".
- Draw two horizontal centerlines in line with the center of the active door deadbolt and handle holes.



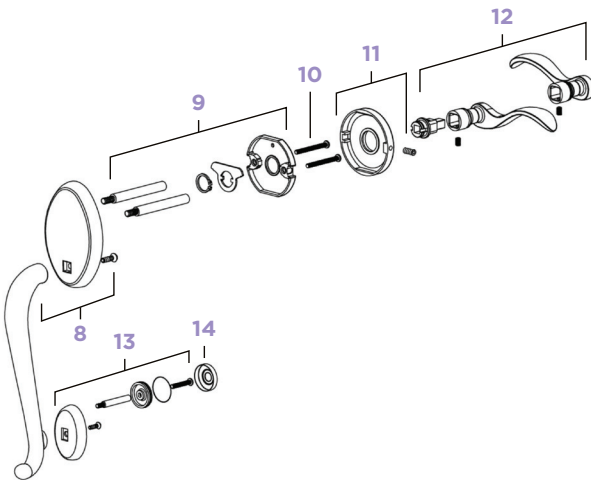
INSTRUCTIONS (Page 3 of 3)

DUMMY DEADBOLT INSTALLATION



- Cover #2 OUTSIDE DUMMY CYLINDER with #1 BLANK CYLINDER COVER. Insert #2 and 1 OUTSIDE DUMMY CYLINDER and BLANK CYLINDER COVER into #3 CYLINDER COVER PLATE.
- Place the cylinder and plate against the outside of the door and insert into the 1 1/2" pre-drilled handle hole.
- Hold and place #4 MOUNTING PLATE on the inside of the door. Insert and tighten with #5 2" PAN HEAD SCREWS (two) into the back of the dummy cylinder.
- Place #6 INSIDE COVER PLATE over #4 MOUNTING PLATE and tighten with #7 1/2" OVAL HEAD SCREWS (two).

DUMMY HANDLE INSTALLATION



- Place the top of #8 OUTSIDE DUMMY HANDLE ASSEMBLY & SCREWS against the outside of the door and insert the two screw post on the backside of the handle assembly into the pre-drilled handle holes on the inactive door.
- Hold in place while putting #9 INSIDE HANDLE MOUNTING PLATE, ASSEMBLY & SCREWS on the inside. Screw #9 INSIDE HANDLE MOUNTING PLATE, ASSEMBLY & SCREWS to the handle assembly using #10 1-1/2" FLAT HEAD SCREWS (two).
- Attach #11 INSIDE HANDLE COVER PLATE & SCREWS to the mounting plate by pressing it on and secure with the set screw. Place #12 INSIDE LEVER HANDLE ASSEMBLY (LEFT OR RIGHT) & SCREWS into #9 INSIDE HANDLE MOUNTING PLATE, ASSEMBLY & SCREWS then tighten the set screw from below with the Allen wrench provided.
- Insert #13 INSIDE LOWER MOUNTING ASSEMBLY FOR OUTSIDE HANDLE from the inside of the door and screw in the pre-drill bottom handle set hole, then tighten to secure the handle assembly to the door.
- Screw #14 SCREW COVER to the thread washer on #13 INSIDE LOWER MOUNTING ASSEMBLY FOR OUTSIDE HANDLE.